

Sharrcem Facts

QUALITY - OUR PRIORITY

The Sharrcem quality department is very strict in reference to the requirements of the standards for chemical and mechanical analysis of the cements and mortars, so as to assure its customers high quality, essential for these critical products for the construction industry.

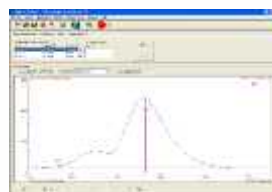
Following these Management commitments Sharrcem has been certified with the European Norms ISO 9001-2008 quality management system in all its processes, with special focus in its laboratory, which in 2012 has been equipped with the most advanced instruments for chemical and mechanical analysis. This can guarantee a high and consistent quality of the products. The laboratory is accredited for testing cements in accordance with ISO/IEC 17025 by the Kosovo Accreditation Directorate



The X-ray Fluorescence (XRF) Ausmon Max spectrometer is an x-ray instrument used for non-destructive quantitative chemical analysis of rocks and minerals, practically for all materials used in cement production. XRF analyses are so precise and fast that within two minutes one can have a chemical analysis that otherwise would have taken hours.



It analyses directly, by trace element analysis, the tablets made of previously fine ground and pressed material. Sharrcem's Laboratory is operated by trained staff, certified to perform all the chemical and physical-mechanical tests for cement.

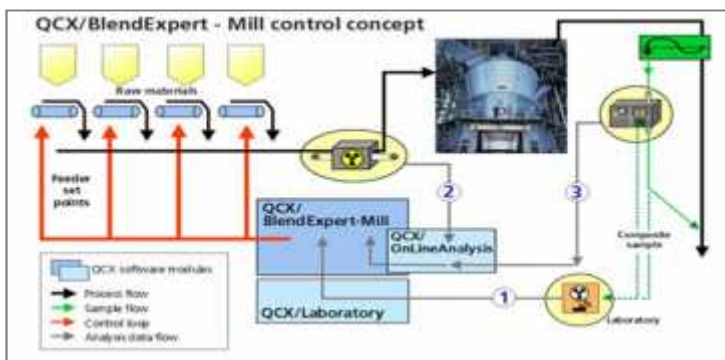


SHARRCEM
TITAN

AUTOMATION'S QCX SYSTEM

The Automation QCX expert system (Quality Control by Computer and X-ray) incorporates sampling, sample preparation and analysis activities in an integrated system architecture allowing for any degree of automation.

The new, fully equipped, CCR (Central Control Room) connects the Laboratory where the technical staff performs the analyses and continuous control of the chemical composition of cement and clinker, with the outlets that regulate the feeding of the raw materials into the kiln.



Developed for X-ray based quality control in cement production, the QCX system enables fast and online adjustment of the inflow of different raw materials, thus correcting the chemical composition of the raw meal immediately after detecting the deviation in the final product.



The FL Smidth new generation QCX system provides fast and reliable data for process quality control and allows documentation and reporting of product quality throughout the production process.



SHARRCEM

TITAN Group Company



Group Corporate Values

INTEGRITY



KNOW-HOW

VALUE TO CUSTOMER



DELIVERING RESULTS

CONTINUOUS SELF-IMPROVEMENT



CORPORATE SOCIAL RESPONSIBILITY